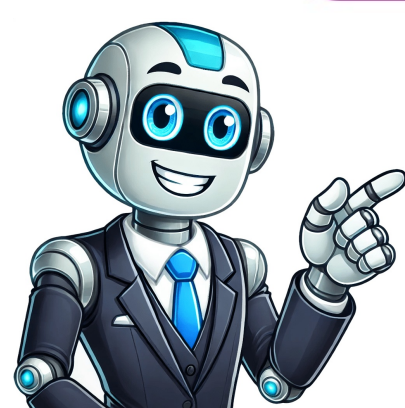


I'm not a robot



Masters programs at western

Western University offers three Master's degree programs in Artificial Intelligence accredited by the Vector Institute. The Master of Data Analytics (MDA) program is a one-year professional science master's program that equips students with technical data analytics skills and prepares them for career transition. A graduate Collaborative Specialization provides training in modern machine learning approaches across various disciplines. Students must be admitted to a participating graduate program, take foundational and applied machine learning classes, and receive entrepreneurial, ethical, and project management training. The Department of Computer Science and Electrical and Computer Engineering offers a Graduate Collaborative Specialization in Artificial Intelligence. This collaborative program provides training in artificial intelligence methodologies and enabling technologies. Students must first complete their home department's Master's degree program and fulfill additional requirements specified by the collaborative specialization. Western University's Master of Public Health program uses a combined case-based and team-based approach to learning, fostering an environment that promotes collaboration, problem-solving, and critical thinking. The program has attributes such as academic guidance, career advice, and camaraderie among students, making it suitable for those seeking professional skills translation. As I built my academic foundation, it naturally influenced my academic journey. My dream career involves working as a public health professional in an innovative setting focused on improving healthcare access and outcomes, particularly for vulnerable populations. When it comes to campus workspaces, the patio tables behind the Western Centre are a great spot to connect with classmates during warmer months. For those considering our graduate program, I'd advise them to explore various areas within public health, such as health promotion or disease surveillance. Connecting with professionals in the field and seeking insight from students and alumni can also be beneficial. Our Master of Public Health Program is designed to address real-world public health issues, providing an immersive learning experience. The 12-month program combines case-based learning with experiential exercises, preparing students for dynamic careers. Unique features include a small cohort size, practicum opportunities, and accreditation from the Council on Education for Public Health (CEPH). The program is structured around full-time study and course-based tuition. Students can estimate their expenses using our Graduate Student Affordability Calculator. To be considered for admission, professionals seeking to advance in public health or prepare for leadership roles are encouraged to apply. We strive for maximum diversity in our student cohort and consider both education and experience important factors in the application process. To be considered for this program, applicants must meet certain requirements. These include having a four-year undergraduate degree with a minimum 70% average over the last two years of study. Additionally, they should have some experience in public health, whether through work or volunteering. If their previous education was not in an English-speaking country, they will also need to demonstrate proficiency in English by taking a language test like TOEFL or IELTS. It's recommended that applicants have completed an undergraduate statistics course with a minimum 70% average within the last five years. International students must also meet the English language fluency requirements. This involves taking a language test, such as TOEFL, IELTS, or CAEL, and having the official results sent directly to the School of Graduate and Postdoctoral Studies. The program's application deadline is not specified for domestic and international students. However, acceptance notifications begin in April and continue until August. The two-year program combines coursework with a thesis and allows each student to tailor their learning to their needs and interests. In their first year, students take three mandatory courses: Debates in Geographic Thought, Research Design, and an approved Methods Course. They also choose at least two other courses from various specialized options in their area of interest. Throughout the program, they work towards completing a supervised thesis. Masters students are supervised by an Advisory Committee consisting of at least two members, including a Supervisor and one or more Advisors. The Supervisor guides all aspects of the student's academic program, especially the research project and thesis writing. Exceptional Master's students may be eligible to upgrade directly to a PhD without completing additional coursework. For more information on upgrading requirements, consult the Graduate Student Handbook. Phone: 519-661-2111, Ext. 85033; Email: ljohns24@uwo.ca for inquiries about graduate program regulations and procedures. Western University offers MSc and PhD degrees in Epidemiology and Biostatistics, providing students with a comprehensive education in policy-relevant methodologies from various fields. The Own Your Future professional development program supports graduate students in becoming career-ready professionals by assessing their strengths, identifying areas for growth, and developing essential skills for future success. Visit www.uwo.ca/ownyourfuture to learn more. **Program Details:** * Program Length: 12 Terms (Full-time study) * Funding Information: Graduate Student Funding Support Package * Scholarships: Applicants are encouraged to apply for available scholarships if eligible. **Admission Requirements:** * A two-year, research thesis-based Master's degree with a minimum average of 80% in graduate-level coursework. * Strong performance in recent statistics courses; our program recommends including examples of statistical method application in work roles. **English Language Proficiency:** Applicants whose first language is not English must provide evidence of their proficiency in the use of English. Note that our program does not extend conditional offers based on anticipated English Language Proficiency testing completion. **Application Deadline:** * Applications open on October 15. * Application deadline is December 1. * Acceptance notifications are sent by the end of June. Western University's research areas include: * Biostatistics * Epidemiology Students who finish our Master's program are highly qualified for PhD programs and jobs that demand advanced research and communication skills, especially those in the public and private sectors. As an MA student, you will have access to a variety of resources: office space within the department; one-on-one interactions with faculty members; opportunities to work as a Research Assistant; the chance to quickly transition into our PhD program; small class sizes; strong funding packages, including the possibility of serving as a Teaching Assistant; and access to large data sets for publishing original research. Our full-time MA program typically takes a year (three terms) to complete, with September start dates only. There are two ways to meet the requirements: 1. Research Paper Option This option requires completing three courses in the first term, including 'Politics 9501A: Research Design', and three more courses in the second term. In the third term, students must write a major research paper under the supervision of a full-time faculty member. 2. Coursework Intensive Option This option involves completing three courses in the first term, including 'Politics 9501A: Research Design', and three additional courses in the second term. In the third term, students take one more course instead of writing the research paper. It might be possible for students to earn a degree with a specific specialization through either program choice. For further information and approval, please contact the graduate chair. General requirements The Master's is a three-term (Fall, Winter, Summer) full-time program There are two options: Research Paper option: six courses in Fall/Winter and a research paper in Summer Coursework Intensive option: three courses in Fall, three courses in Winter, and one course in Summer More details can be found in the Political Science Graduate Student Handbook. Western University is committed to delivering top-notch graduate education since its first Master's program was introduced in 1881. The institution offers 160 diverse graduate degree programs, including professional and interdisciplinary courses that provide endless opportunities for growth and exploration. Our services are designed to support students' personal and academic development, offering a balance of structure and flexibility. As part of the Western community, you'll join a collaborative environment with scholars who can help shape your intellectual partnerships, which will last a lifetime. You'll also be joining a network of esteemed alumni comprising over 270,000 individuals from around 160 countries worldwide. As one of Canada's top research-intensive universities, Western has garnered international recognition for its excellence in graduate education. We provide first-class research facilities and infrastructure, competitive funding packages, and a comprehensive academic library system. Our faculty consists of leaders in their fields, with 58 Canada Research Chairs among our ranks. Western has established signature areas of global-scale research excellence, including Neuroscience/Brain & Mind, Materials & Biomaterials, Wind Engineering & Natural Disaster Mitigation, Environmental Sustainability & Green Energy, Philosophy of Science, Planetary Science & Exploration, and Musculoskeletal Health. Our graduate students have the opportunity to learn from world-renowned experts and collaborate with distinguished academics. At Western, we believe that success in today's careers requires not only a solid academic foundation but also complementary professional skills. We offer our graduate students a range of professional development services to prepare them for the demands of tomorrow. Looking to elevate your career and create a meaningful graduate experience, individuals like myself seek out programs that cater to their unique aspirations. For me, the Ivey MBA program offered the perfect blend of data analytics, leadership, and networking opportunities. The goal was to accelerate my HR career and eventually reach senior leadership roles in large organizations. I believe that providing sound HR advice requires a comprehensive understanding of business principles, strategic thinking, and a deep grasp of the company's holistic strategy. This is exactly what Ivey's MBA program offers, preparing me well for such positions. As for "home," it holds a special place in my heart, being Edmonton, Alberta. I chose Western University for its esteemed Ivey MBA program, which has provided an exceptional education and unparalleled networking opportunities. My primary motivation was to grow my professional network east of the country, enhance my career prospects, and build a robust business foundation that complements my existing HR experience. Personally, I'm deeply passionate about volunteering and traveling. These experiences have allowed me to meet like-minded individuals, learn about diverse cultures, and develop valuable interpersonal skills. My new venture project aims to provide sustainable produce to remote communities in northern regions using innovative shipping containers. By leveraging technology, such as mobile apps and camera monitoring, we can efficiently transport fresh produce while minimizing environmental impact. To prospective applicants, I would advise thoroughly researching the program (attending First Class on the Road events, visiting campuses, and reading rankings) and engaging with current students, alumni, and staff to gain a deeper understanding of the program's benefits. The Ivey MBA is a transformative experience designed for ambitious leaders seeking to refine their skills, develop leadership abilities, and accelerate career success. Non-native English speakers must provide proof of their proficiency in using the English language when applying for an essay question-based process. Additionally, applicants whose first language is not English will need to demonstrate their command of the English language as part of the application requirements. For more information on deadlines and notifications, please visit the MBA Admissions page.