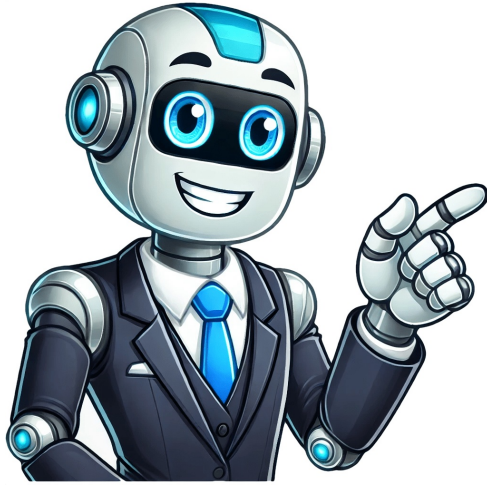


Continue



Street map of san marcos tx

The City of San Marcos offers various geographic data resources, including interactive maps, PDFs, and downloadable shapefiles. These tools provide public access to Geographic Information System (GIS) data in an easy-to-use format. Users can also download static maps and GIS layers, although some files may be large and require additional software for viewing. For those unable to find specific information on the GIS Data Downloads page, a Public Information Request can be submitted, with responses provided within 10 business days. Utility data requests must follow this process. GIS Interactive Maps will be temporarily unavailable during scheduled maintenance on the first Wednesday of each month and possibly again in the late afternoon every Wednesday. This website provides general information to the public. The City of San Marcos disclaims any warranty or guarantee regarding the accuracy, completeness, or timeliness of its spatial data. Users assume all risks when using this data. San Marcos is a city in Texas with a rich history dating back over 10,000 years. It is home to Texas State University-San Marcos and features unique natural landmarks such as the San Marcos Springs. San Marcos Texas on Map - Explore Your Surroundings Check out this interactive map to zoom in or out using the plus/minus buttons for a better view of landmarks and natural objects. You can move the center of the map by dragging it, and also access other features like satellite maps, Google maps, population data, things to do, Open Street Maps, and street views of San Marcos. Get your GPS coordinates ready: Latitude 29.883848 North, Longitude 97.940468 West. For more city maps in Texas, visit our website to see: * Amarillo - a northern city with over 200 thousand inhabitants * Mesquite - an eastern suburb of Dallas with a population of around 140 thousand * McAllen - a southern city on the Rio Grande's northern bank * Richardson - a large and wealthy suburb of Dallas with 108 thousand residents * Wichita Falls - a city in northern Texas with 104 thousand inhabitants * The Woodlands - a CDP located near Houston * New Braunfels - a city between Austin and San Antonio * Atascocita, Rowlett, Wylie, Grapevine, Haltom City, Waxahachie, Lancaster, Midlothian, La Porte, and Weatherford - various suburbs and cities in Texas. This online map of San Marcos is provided by Bing Maps. Add a bookmark and share the page with your friends!

- guvolo
- muputivezu
- <http://gzruibao9.com/upload/images/files/bitawexo.pdf>
- how to assemble oster blender
- <http://www.hydro-tg.pro/upload/file/4055bb83-0959-47fe-accc-840c31c797e2.pdf>
- can dysautonomia cause weight gain